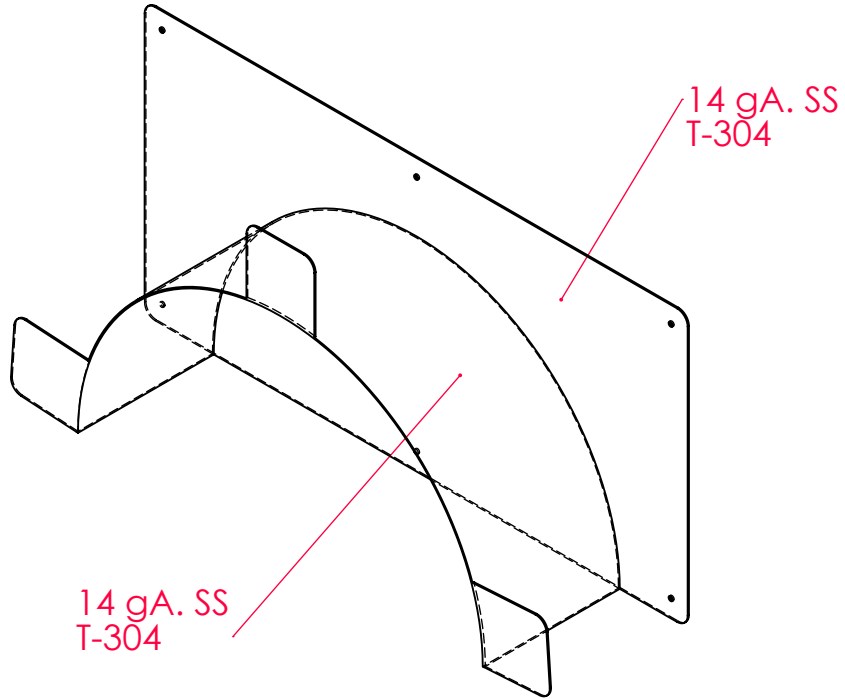


ISOMETRIC VIEW



MADE IN
THE U.S.A
CERTIFIED
TO ANSI



Material Specifications	
Material	14 gA. SS
Type	T-304
Shape	
Wall Thickness	0.0751 in
Finish	

USE FOR ARCHITECT / ENGINEER / CONTRACTOR APPROVAL

JOB NAME _____ DATE _____
 MODEL No. _____ QTY _____
 CUSTOMER _____
 CONTRACTOR _____
 ARCHITECT / ENGINEER _____

© 2019 ALL RIGHTS RESERVED.

This document/s contains material protected under International and Federal Copyright Laws and Treaties. Any unauthorized reprint or use of this material is prohibited. No part of this document may be reproduced or transmitted in any form or by any means, electronic or mechanical, including photocopying, recording, or by any information storage and retrieval system without express written permission from Berlin Food & Lab Equipment Company. For permission contact (legal@berlinusa.com)



43 SOUTH LINDEN AVE.
 SOUTH SAN FRANCISCO, CA 94080
 PH (650) 589-4231 FAX (650) 589-3981
 WWW.BERLINUSA.COM

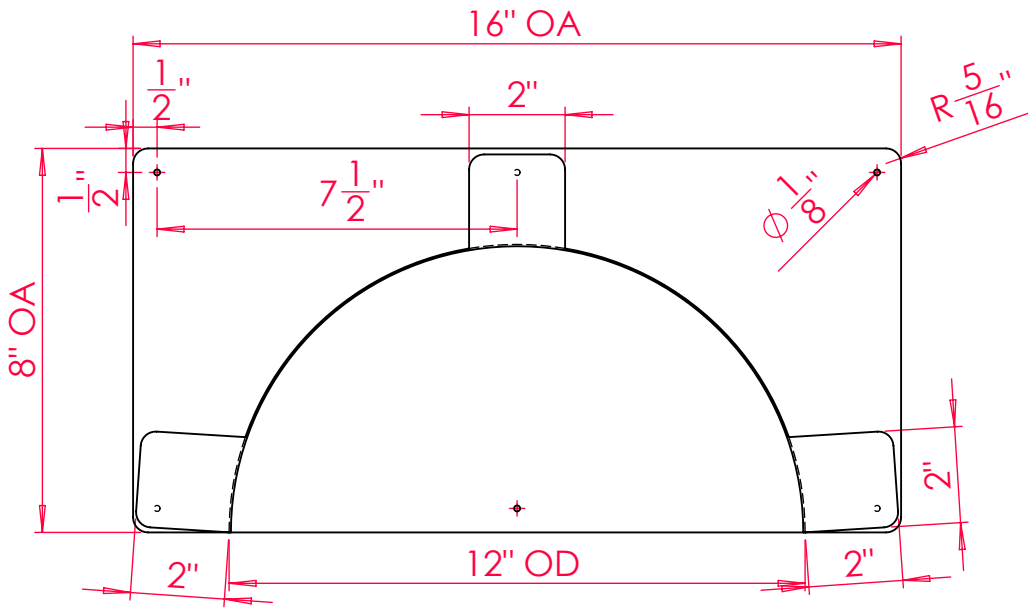
Clean Room

Wall Mount Hose Racks

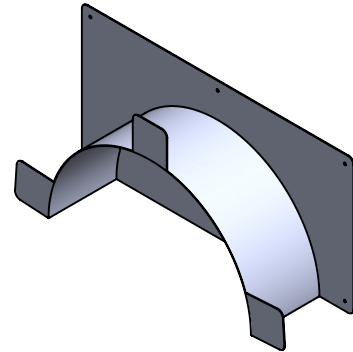
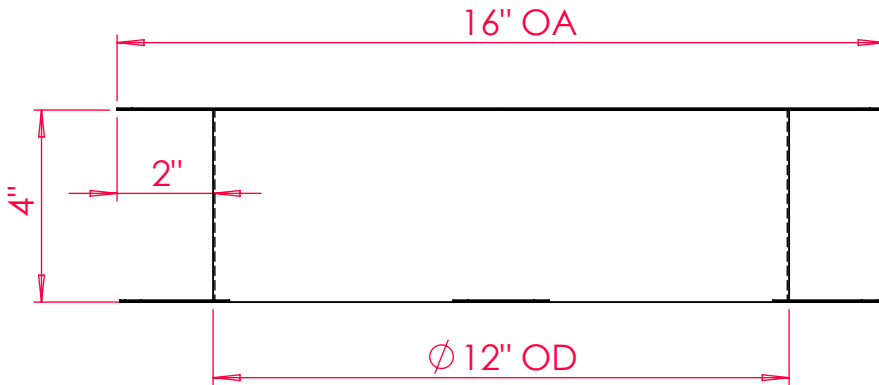
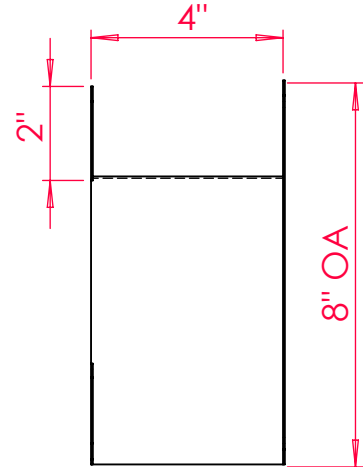
DATE: 10-20-23

DWG: #0068A

FRONT VIEW



SIDE VIEW



PLAN VIEW

Material Specifications	
Material	14 gA. SS
Type	T-304
Shape	
Wall Thickness	0.0751 in
Finish	

USE FOR ARCHITECT / ENGINEER / CONTRACTOR APPROVAL

JOB NAME _____ DATE _____
 MODEL No. _____ QTY _____
 CUSTOMER _____
 CONTRACTOR _____
 ARCHITECT / ENGINEER _____



MADE IN
THE U.S.A
CERTIFIED
TO ANSI



43 SOUTH LINDEN AVE.
SOUTH SAN FRANCISCO, CA 94080
PH (650) 589-4231 FAX (650) 589-3981
WWW.BERLINUSA.COM

© 2019 ALL RIGHTS RESERVED.

This document/s contains material protected under International and Federal Copyright Laws and Treaties. Any unauthorized reprint or use of this material is prohibited. No part of this document may be reproduced or transmitted in any form or by any means, electronic or mechanical, including photocopying, recording, or by any information storage and retrieval system without express written permission from Berlin Food & Lab Equipment Company. For permission contact (legal@berlinusa.com)

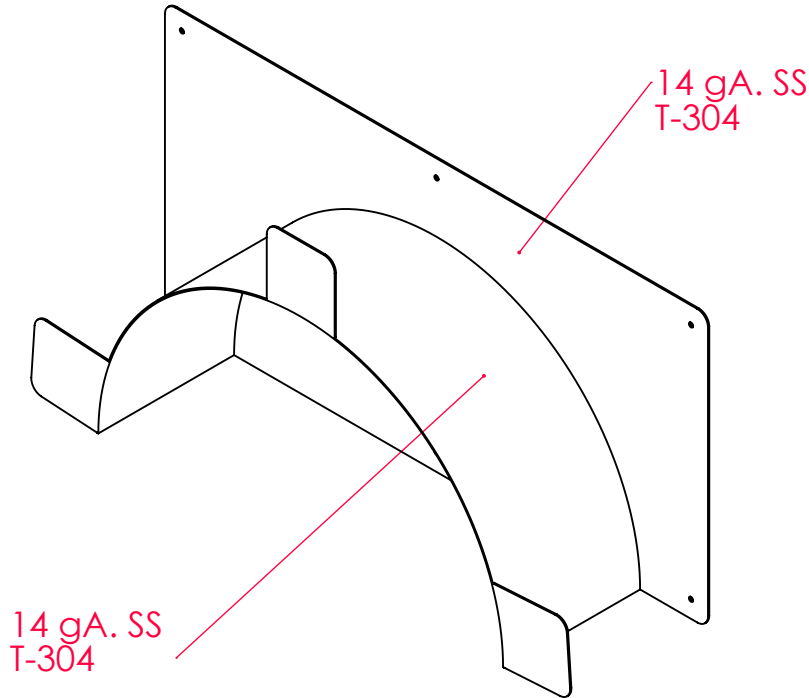
Clean Room

Wall Mount Hose Racks

DATE: 10-20-23

DWG: #0068A

ISOMETRIC VIEW



MADE IN
THE U.S.A
CERTIFIED
TO ANSI



Material Specifications	
Material	14 gA. SS
Type	T-304
Shape	
Wall Thickness	0.0751 in
Finish	

© 2019 ALL RIGHTS RESERVED.

This document/s contains material protected under International and Federal Copyright Laws and Treaties. Any unauthorized reprint or use of this material is prohibited. No part of this document may be reproduced or transmitted in any form or by any means, electronic or mechanical, including photocopying, recording, or by any information storage and retrieval system without express written permission from Berlin Food & Lab Equipment Company. For permission contact (legal@berlinusa.com)

USE FOR ARCHITECT / ENGINEER / CONTRACTOR APPROVAL

JOB NAME _____ DATE _____
 MODEL No. _____ QTY _____
 CUSTOMER _____
 CONTRACTOR _____
 ARCHITECT / ENGINEER _____



43 SOUTH LINDEN AVE.
SOUTH SAN FRANCISCO, CA 94080
PH (650) 589-4231 FAX (650) 589-3981
WWW.BERLINUSA.COM

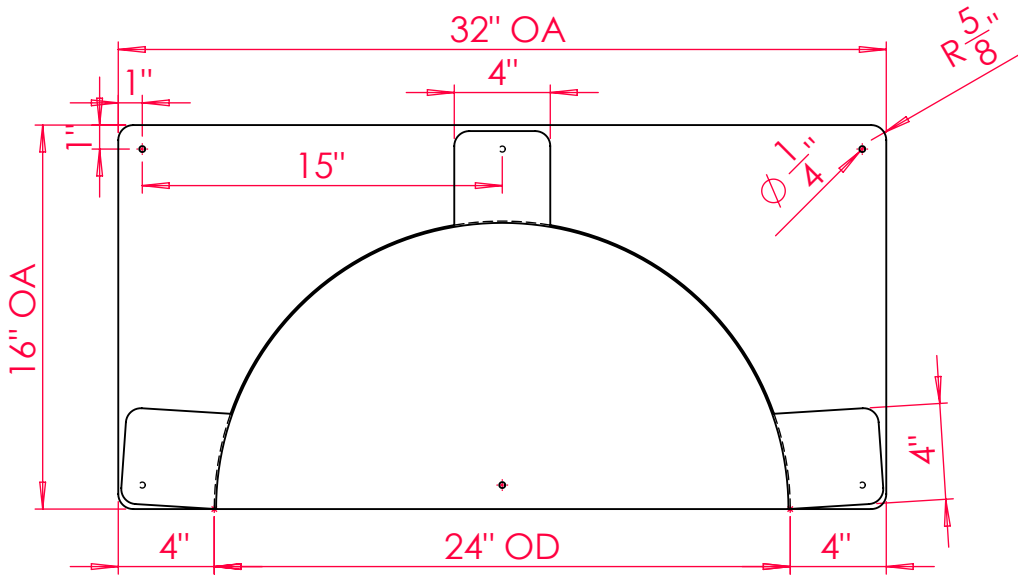
Clean Room

Wall Mount Hose Racks

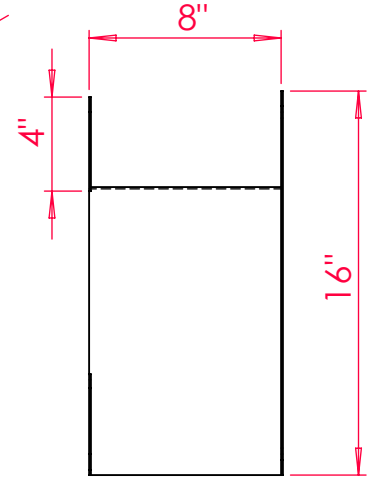
DATE: 10-20-23

DWG: #0068B

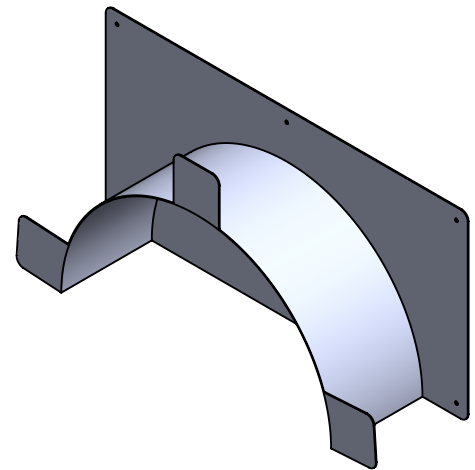
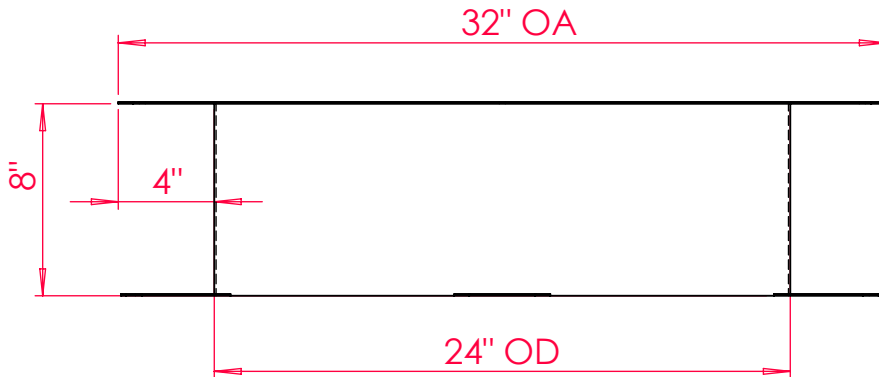
FRONT VIEW



SIDE VIEW



PLAN VIEW



Material Specifications

Material	14 gA. SS
Type	T-304
Shape	
Wall Thickness	0.0751 in
Finish	

USE FOR ARCHITECT / ENGINEER / CONTRACTOR APPROVAL

JOB NAME _____ DATE _____
 MODEL No. _____ QTY _____
 CUSTOMER _____
 CONTRACTOR _____
 ARCHITECT / ENGINEER _____



MADE IN
THE U.S.A
CERTIFIED
TO ANSI

© 2019 ALL RIGHTS RESERVED.

This document/s contains material protected under International and Federal Copyright Laws and Treaties. Any unauthorized reprint or use of this material is prohibited. No part of this document may be reproduced or transmitted in any form or by any means, electronic or mechanical, including photocopying, recording, or by any information storage and retrieval system without express written permission from Berlin Food & Lab Equipment Company. For permission contact (legal@berlinusa.com)



43 SOUTH LINDEN AVE.
SOUTH SAN FRANCISCO, CA 94080
PH (650) 589-4231 FAX (650) 589-3981
WWW.BERLINUSA.COM

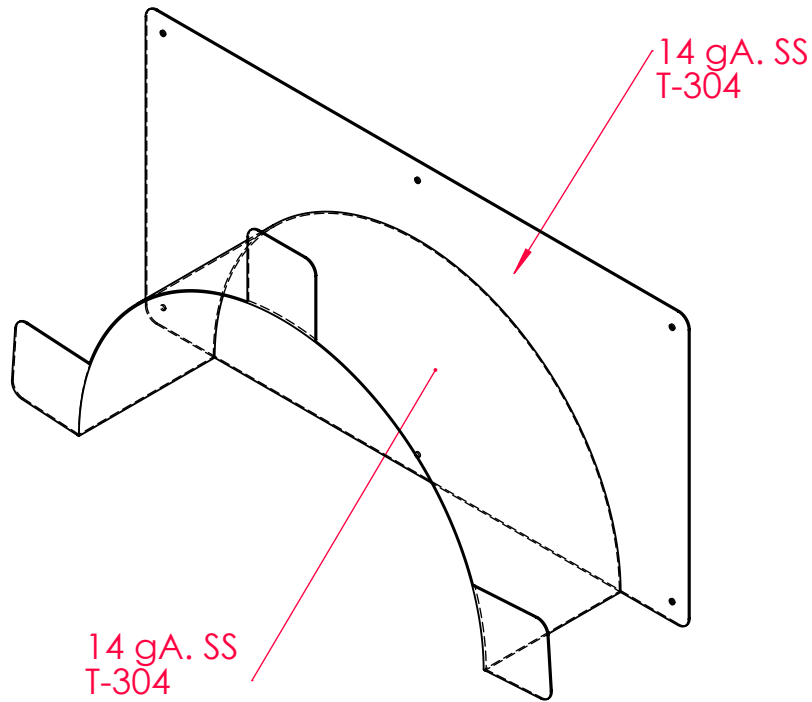
Clean Room

Wall Mount Hose Racks

DATE: 10-20-23

DWG: #0068B

ISOMETRIC VIEW



MADE IN
THE U.S.A
CERTIFIED
TO ANSI



Material Specifications	
Material	14 gA. SS
Type	T-304
Shape	
Wall Thickness	0.0751 in
Finish	

© 2019 ALL RIGHTS RESERVED.

This document/s contains material protected under International and Federal Copyright Laws and Treaties. Any unauthorized reprint or use of this material is prohibited. No part of this document may be reproduced or transmitted in any form or by any means, electronic or mechanical, including photocopying, recording, or by any information storage and retrieval system without express written permission from Berlin Food & Lab Equipment Company. For permission contact (legal@berlinusa.com)

USE FOR ARCHITECT / ENGINEER / CONTRACTOR APPROVAL

JOB NAME _____ DATE _____
 MODEL No. _____ QTY _____
 CUSTOMER _____
 CONTRACTOR _____
 ARCHITECT / ENGINEER _____



43 SOUTH LINDEN AVE.
 SOUTH SAN FRANCISCO, CA 94080
 PH (650) 589-4231 FAX (650) 589-3981
 WWW.BERLINUSA.COM

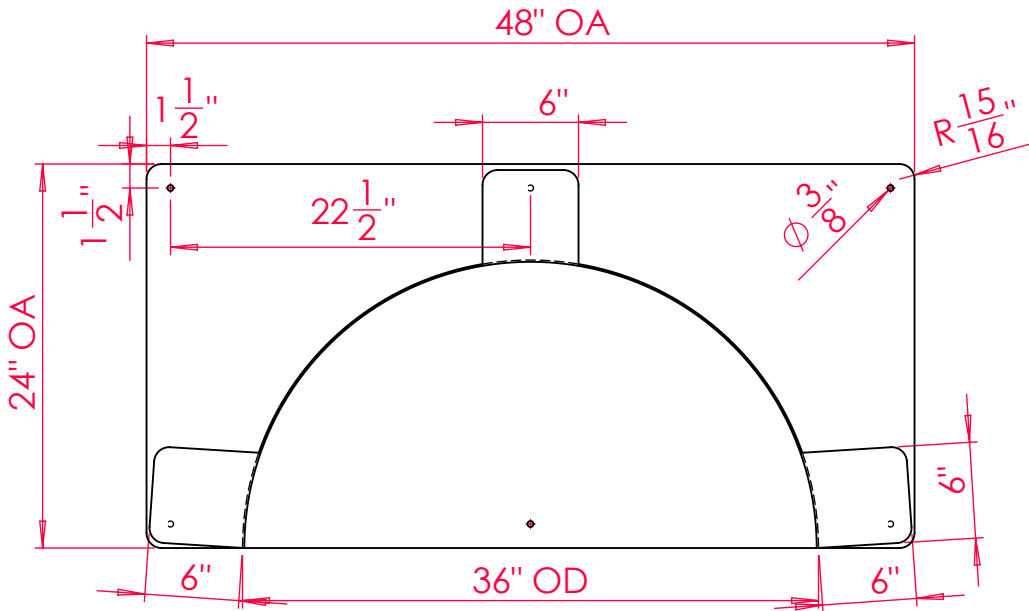
Clean Room

Wall Mount Hose Racks

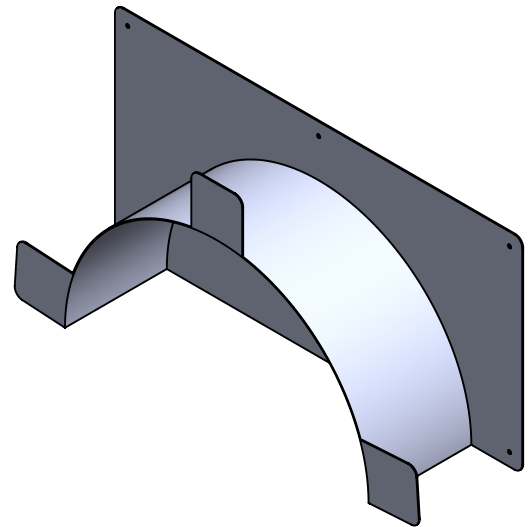
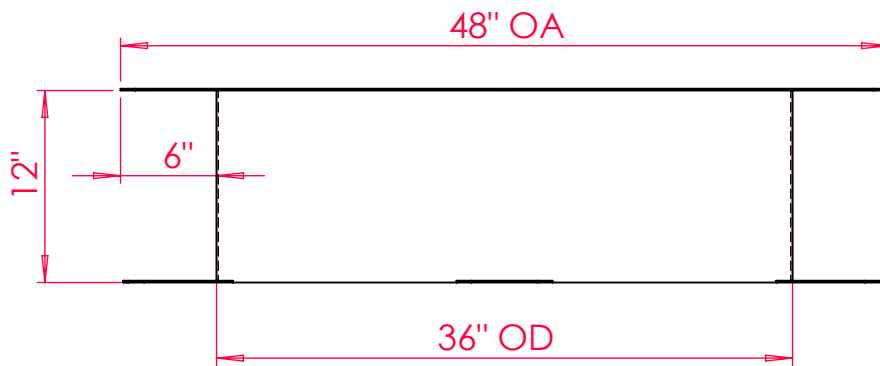
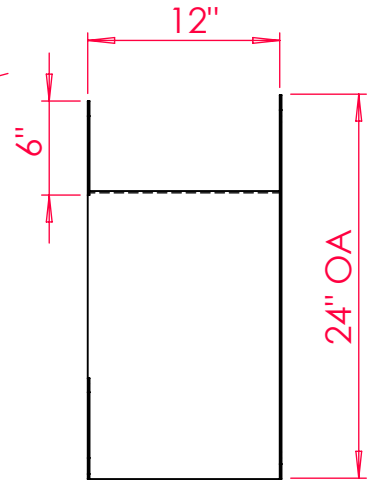
DATE: 10-20-23

DWG: #0068C

FRONT VIEW



SIDE VIEW



PLAN VIEW

Material Specifications	
Material	14 gA. SS
Type	T-304
Shape	
Wall Thickness	0.0751 in
Finish	

USE FOR ARCHITECT / ENGINEER / CONTRACTOR APPROVAL

JOB NAME _____ DATE _____
 MODEL No. _____ QTY _____
 CUSTOMER _____
 CONTRACTOR _____
 ARCHITECT / ENGINEER _____



MADE IN
THE U.S.A
CERTIFIED
TO ANSI

© 2019 ALL RIGHTS RESERVED.

This document/s contains material protected under International and Federal Copyright Laws and Treaties. Any unauthorized reprint or use of this material is prohibited. No part of this document may be reproduced or transmitted in any form or by any means, electronic or mechanical, including photocopying, recording, or by any information storage and retrieval system without express written permission from Berlin Food & Lab Equipment Company. For permission contact (legal@berlinusa.com)



43 SOUTH LINDEN AVE.
SOUTH SAN FRANCISCO, CA 94080
PH (650) 589-4231 FAX (650) 589-3981
WWW.BERLINUSA.COM

Clean Room

Wall Mount Hose Racks

DATE: 10-20-23

DWG: #0068C