

HAND CRAFTED PRO-SERIES

undermount sinks



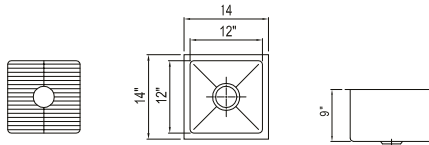
Performance Through Stainless!

Hand crafted Pro-series Undermount Sinks S-Series

Specifications

16GA thickness (1.65mm). Stainless steel construction T-304 premium high grade stainless steel with a #4 satin finish Sound coated bottom for "noise reduction" fully welded and polished assembly. Sinks are not stamped. Beautifully polished and detailed for professional applications.

Mod S-430



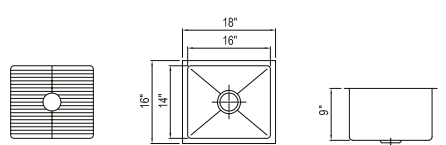
Sink Price

\$936

Add S/S Grates

\$285

Mod S-431



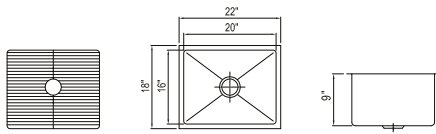
Sink Price

\$1,044

Add S/S Grates

\$309

Mod S-432



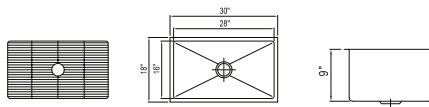
Sink Price

\$1,154

Add S/S Grates

\$325

Mod S-433



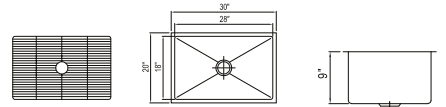
Sink Price

\$1,298

Add S/S Grates

\$341

Mod S-434



Sink Price

\$1,334

Add S/S Grates

\$357

T-316L for caustic/corrosive environments available as an added option. Call to inquire 650-589-3241

Stainless Grates are

- ✓ Heavy Duty T-304 Stainless Steel
- ✓ 1/4 Thick Perimeter Rod
- ✓ Rubber No Scratch Feet
- ✓ Dish Washer Safe



Made in USA. Certified to ANSI

Code/Standard Compliance ASME 112.19.3.00



USE FOR ARCHITECT / ENGINEER / CONTRACTOR APPROVAL

Job name _____

Date _____ QTY _____ Contractor _____

Model No. _____ Customer _____ Architect/Engineer _____

Performance Through Stainless!

Made in the US since 1941

Hand crafted Pro-series Undermount Sinks S-Series

16G

1,65 mm



T-304
Premium High Grade
Stainless With a
#4 Satin Finish



Noise Reduction
Sound coated bottom
welded and polished
assembly



Not Stamped
Fully formed, welded
and polished



Polished
Beautifully polished and
detailed for professional
applications



T-316
Available for caustic/
corrosive environments



Warranty
Lifetime warranty



NSF Certified
Code/Standard
Compliance
ASME 112.19.3.00

PRICES

Sink Price

Add S/S
Grates

Mod S-430	\$936	\$285
Mod S-431	\$1,044	\$309
Mod S-432	\$1,154	\$325
Mod S-433	\$1,298	\$341
Mod S-434	\$1,334	\$357



16 GA. T-304 Stainless Steel #4 Satin Finish

Hand Crafted Welded and Polished

USE FOR ARCHITECT / ENGINEER / CONTRACTOR APPROVAL

Job name _____
Date _____ QTY _____ Contractor _____
Model No. _____ Customer _____ Architect/Engineer _____

Performance Through Stainless!

43 South Linden Ave South San Francisco CA 94080 Ph (650) 589-4231 Fax (650) 589-3981 www.berlinusa.com

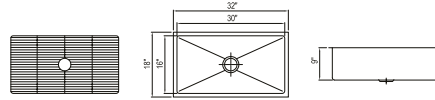


Hand crafted Pro-series Undermount Sinks SL-Series

Specifications

16GA thickness (1.65mm). Stainless steel construction T-304 premium high grade stainless steel with a #4 satin finish Sound coated bottom for "noise reduction" fully welded and polished assembly. Sinks are not stamped. Beautifully polished and detailed for professional applications.

Mod SL-430



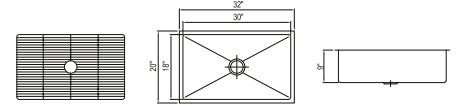
Sink Price

\$1,334

Add S/S Grates

\$357

Mod SL-431



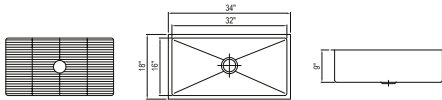
Sink Price

1,369

Add S/S Grates

\$364

Mod SL-432



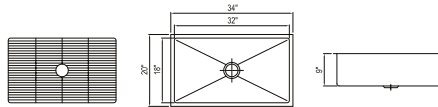
Sink Price

\$1,369

Add S/S Grates

\$373

Mod SL-433



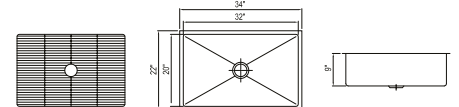
Sink Price

\$1,406

Add S/S Grates

\$380

Mod SL-434



Sink Price

\$1,571

Add S/S Grates

\$396

T-316L for caustic/corrosive environments available as an added option. Call to inquire 650-589-3241

Stainless Grates are

- ✓ Heavy Duty T-304 Stainless Steel
- ✓ 1/4 Thick Perimeter Rod
- ✓ Rubber No Scratch Feet
- ✓ Dish Washer Safe



Made in USA. Certified to ANSI

Code/Standard Compliance ASME 112.19.3.00

USE FOR ARCHITECT / ENGINEER / CONTRACTOR APPROVAL

Job name _____

Date _____ QTY _____ Contractor _____

Model No. _____ Customer _____ Architect/Engineer _____

Performance Through Stainless!

Made in the US since 1941

Hand crafted Pro-series Undermount Sinks SL-Series

16G

1,65 mm



T-304
Premium High Grade
Stainless With a
#4 Satin Finish



Noise Reduction
Sound coated bottom
welded and polished
assembly



Not Stamped
Fully formed, welded
and polished



Polished
Beautifully polished and
detailed for professional
applications



T-316
Available for caustic/
corrosive environments



Warranty
Lifetime warranty



NSF Certified
Code/Standard
Compliance
ASME 112.19.3.00

PRICES

Sink Price

Add S/S
Grates

Mod SL-430	\$1,334	\$357
Mod SL-431	\$1,369	\$364
Mod SL-432	\$1,369	\$373
Mod SL-433	\$1,406	\$380
Mod SL-434	\$1,671	\$396



16 GA. T-304 Stainless Steel #4 Satin Finish

Hand Crafted Welded and Polished

USE FOR ARCHITECT / ENGINEER / CONTRACTOR APPROVAL

Job name _____
Date _____ QTY _____ Contractor _____
Model No. _____ Customer _____ Architect/Engineer _____

Performance Through Stainless!

43 South Linden Ave South San Francisco CA 94080 Ph (650) 589-4231 Fax (650) 589-3981 www.berlinusa.com



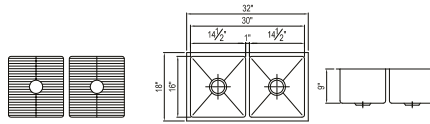
Made in the US since 1941

Hand crafted Pro-series Undermount Sinks SD-Series

Specifications

16GA thickness (1.65mm). Stainless steel construction T-304 premium high grade stainless steel with a #4 satin finish Sound coated bottom for "noise reduction" fully welded and polished assembly. Sinks are not stamped. Beautifully polished and detailed for professional applications.

Mod SD-430



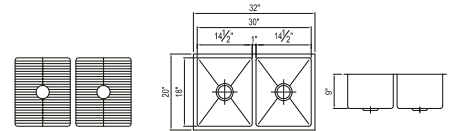
Sink Price

\$2,359

Add S/S Grates

\$712

Mod SD-431



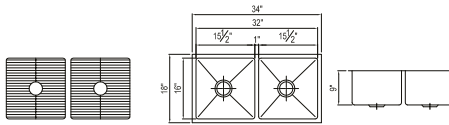
Sink Price

\$2,430

Add S/S Grates

\$728

Mod SD-432



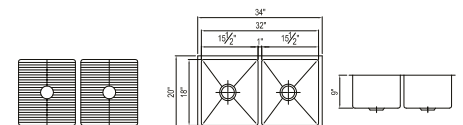
Sink Price

\$2,430

Add S/S Grates

744

Mod SD-433



Sink Price

\$2,502

Add S/S Grates

\$760

T-316L for caustic/corrosive environments available as an added option. Call to inquire 650-589-3241

Stainless Grates are

- ✓ Heavy Duty T-304 Stainless Steel
- ✓ 1/4 Thick Perimeter Rod
- ✓ Rubber No Scratch Feet
- ✓ Dish Washer Safe



Made in USA. Certified to ANSI

Code/Standard Compliance ASME 112.19.3.00

USE FOR ARCHITECT / ENGINEER / CONTRACTOR APPROVAL

Job name _____

Date _____ QTY _____ Contractor _____

Model No. _____ Customer _____ Architect/Engineer _____

Performance Through Stainless!

43 South Linden Ave South San Francisco CA 94080 Ph (650) 589-4231 Fax (650) 589-3981 www.berlinusa.com



Made in the US since 1941

Hand crafted Pro-series Undermount Sinks SD-Series

16G

1,65 mm



T-304
Premium High Grade
Stainless With a
#4 Satin Finish



Noise Reduction
Sound coated bottom
welded and polished
assembly



Not Stamped
Fully formed, welded
and polished



Polished
Beautifully polished and
detailed for professional
applications



T-316
Available for caustic/
corrosive environments



Warranty
Lifetime warranty



NSF Certified
Code/Standard
Compliance
ASME 112.19.3.00

PRICES

Sink Price

Add S/S
Grates

Mod SD-430	\$2,359	\$713
Mod SD-431	\$2,430	\$728
Mod SD-432	\$2,430	\$728
Mod SD-433	\$2,502	\$760



16 GA. T-304 Stainless Steel #4 Satin Finish

Hand Crafted Welded and Polished

USE FOR ARCHITECT / ENGINEER / CONTRACTOR APPROVAL

Job name _____
Date _____ QTY _____ Contractor _____
Model No. _____ Customer _____ Architect/Engineer _____

Performance Through Stainless!

43 South Linden Ave South San Francisco CA 94080 Ph (650) 589-4231 Fax (650) 589-3981 www.berlinusa.com



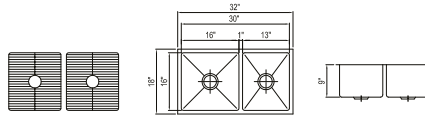
Made in the US since 1941

Hand crafted Pro-series Undermount Sinks SE-Series

Specifications

16GA thickness (1.65mm). Stainless steel construction T-304 premium high grade stainless steel with a #4 satin finish Sound coated bottom for "noise reduction" fully welded and polished assembly. Sinks are not stamped. Beautifully polished and detailed for professional applications.

Mod SE-430



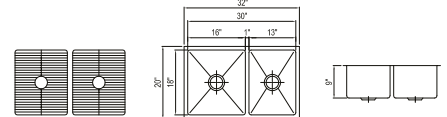
Sink Price

\$2,359

Add S/S Grates

\$713

Mod SE-431



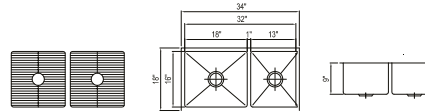
Sink Price

\$2,430

Add S/S Grates

\$728

Mod SE-432



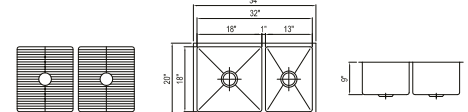
Sink Price

\$2,430

Add S/S Grates

\$728

Mod SE-433



Sink Price

\$2,502

Add S/S Grates

\$760

T-316L for caustic/corrosive environments available as an added option. Call to inquire 650-589-3241

Stainless Grates are

- ✓ Heavy Duty T-304 Stainless Steel
- ✓ 1/4 Thick Perimeter Rod
- ✓ Rubber No Scratch Feet
- ✓ Dish Washer Safe



Made in USA. Certified to ANSI

Code/Standard Compliance ASME 112.19.3.00

USE FOR ARCHITECT / ENGINEER / CONTRACTOR APPROVAL

Job name _____

Date _____ QTY _____ Contractor _____

Model No. _____ Customer _____ Architect/Engineer _____

Performance Through Stainless!

43 South Linden Ave South San Francisco CA 94080 Ph (650) 589-4231 Fax (650) 589-3981 www.berlinusa.com



Made in the US since 1941

Hand crafted Pro-series Undermount Sinks SE-Series

16G

1,65 mm



T-304
Premium High Grade
Stainless With a
#4 Satin Finish



Noise Reduction
Sound coated bottom
welded and polished
assembly



Not Stamped
Fully formed, welded
and polished



Polished
Beautifully polished and
detailed for professional
applications



T-316
Available for caustic/
corrosive environments



Warranty
Lifetime warranty



NSF Certified
Code/Standard
Compliance
ASME 112.19.3.00

PRICES

Sink Price

Add S/S
Grates

Mod SE-430	\$2,359	\$713
Mod SE-431	\$2,430	\$728
Mod SE-432	\$2,430	\$728
Mod SE-433	\$2,502	\$760



16 GA. T-304 Stainless Steel #4 Satin Finish

Hand Crafted Welded and Polished

USE FOR ARCHITECT / ENGINEER / CONTRACTOR APPROVAL

Job name _____
Date _____ QTY _____ Contractor _____
Model No. _____ Customer _____ Architect/Engineer _____

Performance Through Stainless!

43 South Linden Ave South San Francisco CA 94080 Ph (650) 589-4231 Fax (650) 589-3981 www.berlinusa.com

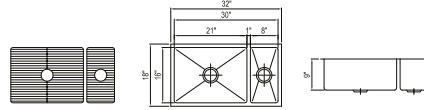


Hand crafted Pro-series Undermount Sinks SM-Series

Specifications

16GA thickness (1.65mm). Stainless steel construction T-304 premium high grade stainless steel with a #4 satin finish Sound coated bottom for "noise reduction" fully welded and polished assembly. Sinks are not stamped. Beautifully polished and detailed for professional applications.

Mod SM-430



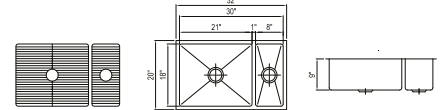
Sink Price

\$2,424

Add S/S Grates

\$594

Mod SM-431



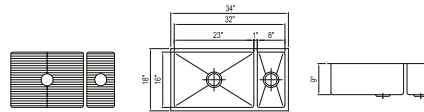
Sink Price

\$2,489

Add S/S Grates

\$602

Mod SM-432



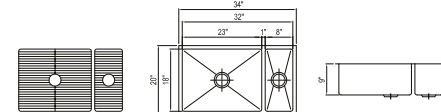
Sink Price

\$2,489

Add S/S Grates

\$602

Mod SM-433



Sink Price

\$2,556

Add S/S Grates

\$633

T-316L for caustic/corrosive environments available as an added option. Call to inquire 650-589-3241

Stainless Grates are

- ✓ Heavy Duty T-304 Stainless Steel
- ✓ 1/4 Thick Perimeter Rod
- ✓ Rubber No Scratch Feet
- ✓ Dish Washer Safe



Made in USA. Certified to ANSI

Code/Standard Compliance ASME 112.19.3.00

USE FOR ARCHITECT / ENGINEER / CONTRACTOR APPROVAL

Job name _____

Date _____ QTY _____ Contractor _____

Model No. _____ Customer _____ Architect/Engineer _____

Performance Through Stainless!

Made in the US since 1941

Hand crafted Pro-series Undermount Sinks SM-Series

16G

1,65 mm



T-304
Premium High Grade
Stainless With a
#4 Satin Finish



Noise Reduction
Sound coated bottom
welded and polished
assembly



Not Stamped
Fully formed, welded
and polished



Polished
Beautifully polished and
detailed for professional
applications



T-316
Available for caustic/
corrosive environments



Warranty
Lifetime warranty



NSF Certified
Code/Standard
Compliance
ASME 112.19.3.00

PRICES

Sink Price

Add S/S
Grates

Mod SM-430	\$2,424	\$594
Mod SM-431	\$2,489	\$602
Mod SM-432	\$2,489	\$602
Mod SM-433	\$2,514	\$633



16 GA. T-304 Stainless Steel #4 Satin Finish

Hand Crafted Welded and Polished

USE FOR ARCHITECT / ENGINEER / CONTRACTOR APPROVAL

Job name _____
Date _____ QTY _____ Contractor _____
Model No. _____ Customer _____ Architect/Engineer _____

Performance Through Stainless!

43 South Linden Ave South San Francisco CA 94080 Ph (650) 589-4231 Fax (650) 589-3981 www.berlinusa.com



HAND CRAFTED PRO-SERIES

undermount sinks

Performance Through Stainless!

