

# HAND CRAFTED PRO-SERIES

undermount sinks



Performance Through Stainless!

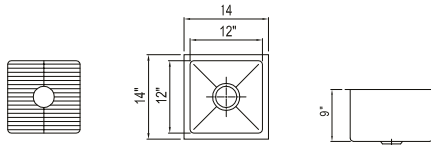
Made in the US since 1941

# Hand crafted Pro-series Undermount Sinks S-Series

## Specifications

16GA thickness (1.65mm). Stainless steel construction T-304 premium high grade stainless steel with a #4 satin finish Sound coated bottom for "noise reduction" fully welded and polished assembly. Sinks are not stamped. Beautifully polished and detailed for professional applications.

### Mod S-430



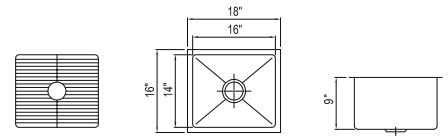
Sink Price

**\$686**

Add S/S Grates

\$234

### Mod S-431



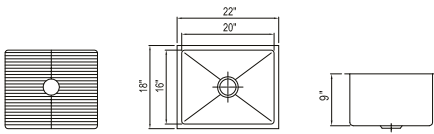
Sink Price

**\$794**

Add S/S Grates

\$254

### Mod S-432



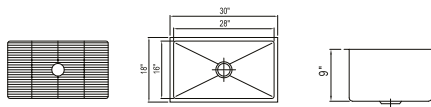
Sink Price

**\$904**

Add S/S Grates

\$267

### Mod S-433



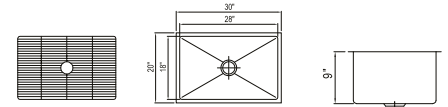
Sink Price

**\$1048**

Add S/S Grates

\$280

### Mod S-434



Sink Price

**\$1084**

Add S/S Grates

\$293



T-316L for caustic/corrosive environments available as an added option. Call to inquire 650-589-3241

Stainless Grates are

- ✓ Heavy Duty T-304 Stainless Steel
- ✓ 1/4 Thick Perimeter Rod
- ✓ Rubber No Scratch Feet
- ✓ Dish Washer Safe



Made in USA. Certified to ANSI Code/Standard Compliance ASME 112.19.3.00

## USE FOR ARCHITECT / ENGINEER / CONTRACTOR APPROVAL

Job name \_\_\_\_\_  
 Date \_\_\_\_\_ QTY \_\_\_\_\_ Contractor \_\_\_\_\_  
 Model No. \_\_\_\_\_ Customer \_\_\_\_\_ Architect/Engineer \_\_\_\_\_

## Performance Through Stainless!



Made in the US since 1941

# Hand crafted Pro-series Undermount Sinks S-Series

16G



1,65 mm



**T-304**  
Premium High Grade Stainless With a #4 Satin Finish

PRICES

Sink Price

Add S/S Grates

Mod S-430

\$686

\$234

Mod S-431

\$794

\$254

Mod S-432

\$904

\$267

Mod S-433

\$1048

\$280

Mod S-434

\$1084

\$293



**Noise Reduction**  
Sound coated bottom welded and polished assembly



**Not Stamped**  
Fully formed, welded and polished



**Polished**  
Beautifully polished and detailed for professional applications



**T-316**  
Available for caustic/ corrosive environments



**Warranty**  
Lifetime warranty



**NSF Certified**  
Code/Standard Compliance ASME 112.19.3.00



16 GA. T-304 Stainless Steel #4 Satin Finish

Hand Crafted Welded and Polished

## USE FOR ARCHITECT / ENGINEER / CONTRACTOR APPROVAL

Job name \_\_\_\_\_

Date \_\_\_\_\_ QTY \_\_\_\_\_ Contractor \_\_\_\_\_

Model No. \_\_\_\_\_ Customer \_\_\_\_\_ Architect/Engineer \_\_\_\_\_

### Performance Through Stainless!

43 South Linden Ave South San Francisco CA 94080 Ph (650) 589-4231 Fax (650) 589-3981 www.berlinusa.com

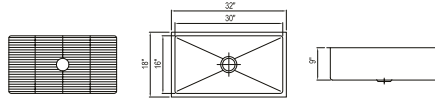


# Hand crafted Pro-series Undermount Sinks SL-Series

## Specifications

16GA thickness (1.65mm). Stainless steel construction T-304 premium high grade stainless steel with a #4 satin finish Sound coated bottom for "noise reduction" fully welded and polished assembly. Sinks are not stamped. Beautifully polished and detailed for professional applications.

### Mod SL-430



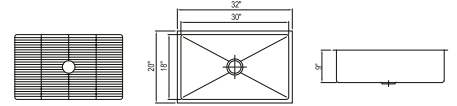
Sink Price

**\$1084**

Add S/S Grates

**\$293**

### Mod SL-431



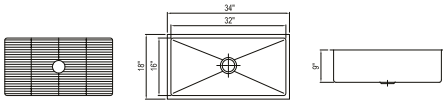
Sink Price

**1119**

Add S/S Grates

**\$299**

### Mod SL-432



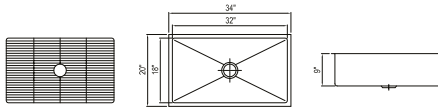
Sink Price

**\$1119**

Add S/S Grates

**\$306**

### Mod SL-433



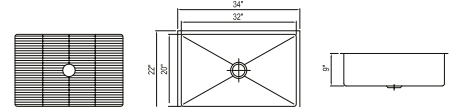
Sink Price

**\$1156**

Add S/S Grates

**\$312**

### Mod SL-434



Sink Price

**\$1321**

Add S/S Grates

**\$325**

T-316L for caustic/corrosive environments available as an added option. Call to inquire 650-589-3241

Stainless Grates are

- ✓ Heavy Duty T-304 Stainless Steel
- ✓ 1/4 Thick Perimeter Rod
- ✓ Rubber No Scratch Feet
- ✓ Dish Washer Safe



Made in USA. Certified to ANSI

Code/Standard Compliance ASME 112.19.3.00

## USE FOR ARCHITECT / ENGINEER / CONTRACTOR APPROVAL

Job name \_\_\_\_\_

Date \_\_\_\_\_ QTY \_\_\_\_\_ Contractor \_\_\_\_\_


Model No. \_\_\_\_\_ Customer \_\_\_\_\_ Architect/Engineer \_\_\_\_\_

Performance Through Stainless!



Made in the US since 1941

# Hand crafted Pro-series Undermount Sinks SL-Series

**16G**  1,65 mm



**T-304**  
Premium High Grade Stainless With a #4 Satin Finish



**Noise Reduction**  
Sound coated bottom welded and polished assembly



**Not Stamped**  
Fully formed, welded and polished



**Polished**  
Beautifully polished and detailed for professional applications



**T-316**  
Available for caustic/ corrosive environments



**Warranty**  
Lifetime warranty



**NSF Certified**  
Code/Standard Compliance ASME 112.19.3.00

PRICES	Sink Price	Add S/S Grates
Mod SL-430	\$1084	\$293
Mod SL-431	\$1119	\$299
Mod SL-432	\$1119	\$299
Mod SL-433	\$1156	\$312
Mod SL-434	\$1321	\$325



16 GA. T-304 Stainless Steel #4 Satin Finish

Hand Crafted Welded and Polished

## USE FOR ARCHITECT / ENGINEER / CONTRACTOR APPROVAL

Job name \_\_\_\_\_  
 Date \_\_\_\_\_ QTY \_\_\_\_\_ Contractor \_\_\_\_\_  
 Model No. \_\_\_\_\_ Customer \_\_\_\_\_ Architect/Engineer \_\_\_\_\_

Performance Through Stainless!

43 South Linden Ave South San Francisco CA 94080 Ph (650) 589-4231 Fax (650) 589-3981 www.berlinusa.com



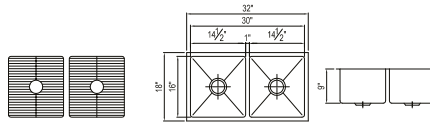
Made in the US since 1941

# Hand crafted Pro-series Undermount Sinks SD-Series

## Specifications

16GA thickness (1.65mm). Stainless steel construction T-304 premium high grade stainless steel with a #4 satin finish Sound coated bottom for "noise reduction" fully welded and polished assembly. Sinks are not stamped. Beautifully polished and detailed for professional applications.

### Mod SD-430



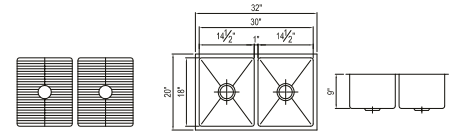
Sink Price

\$2109

Add S/S Grates

\$585

### Mod SD-431



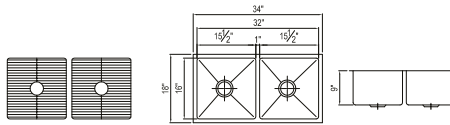
Sink Price

\$2180

Add S/S Grates

\$598

### Mod SD-432



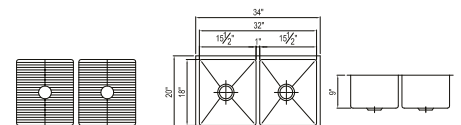
Sink Price

\$2180

Add S/S Grates

\$611

### Mod SD-433



Sink Price

\$2252

Add S/S Grates

\$624



T-316L for caustic/corrosive environments available as an added option. Call to inquire 650-589-3241

Stainless Grates are

- ✓ Heavy Duty T-304 Stainless Steel
- ✓ 1/4 Thick Perimeter Rod
- ✓ Rubber No Scratch Feet
- ✓ Dish Washer Safe



Made in USA. Certified to ANSI Code/Standard Compliance ASME 112.19.3.00

## USE FOR ARCHITECT / ENGINEER / CONTRACTOR APPROVAL

Job name \_\_\_\_\_

Date \_\_\_\_\_ QTY \_\_\_\_\_ Contractor \_\_\_\_\_

Model No. \_\_\_\_\_ Customer \_\_\_\_\_ Architect/Engineer \_\_\_\_\_


## Performance Through Stainless!

43 South Linden Ave South San Francisco CA 94080 Ph (650) 589-4231 Fax (650) 589-3981 www.berlinusa.com



Made in the US since 1941

# Hand crafted Pro-series Undermount Sinks SD-Series

**16G**  1,65 mm



**T-304**  
Premium High Grade Stainless With a #4 Satin Finish



**Noise Reduction**  
Sound coated bottom welded and polished assembly



**Not Stamped**  
Fully formed, welded and polished



**Polished**  
Beautifully polished and detailed for professional applications



**T-316**  
Available for caustic/ corrosive environments



**Warranty**  
Lifetime warranty



**NSF Certified**  
Code/Standard Compliance ASME 112.19.3.00

PRICES	Sink Price	Add S/S Grates
Mod SD-430	\$2109	\$585
Mod SD-431	\$2180	\$598
Mod SD-432	\$2180	\$598
Mod SD-433	\$2252	\$624



16 GA. T-304 Stainless Steel #4 Satin Finish

Hand Crafted Welded and Polished

## USE FOR ARCHITECT / ENGINEER / CONTRACTOR APPROVAL

Job name \_\_\_\_\_  
 Date \_\_\_\_\_ QTY \_\_\_\_\_ Contractor \_\_\_\_\_  
 Model No. \_\_\_\_\_ Customer \_\_\_\_\_ Architect/Engineer \_\_\_\_\_

**Performance Through Stainless!**

43 South Linden Ave South San Francisco CA 94080 Ph (650) 589-4231 Fax (650) 589-3981 www.berlinusa.com





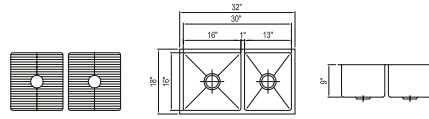
Made in the US since 1941

# Hand crafted Pro-series Undermount Sinks SE-Series

## Specifications

16GA thickness (1.65mm). Stainless steel construction T-304 premium high grade stainless steel with a #4 satin finish Sound coated bottom for "noise reduction" fully welded and polished assembly. Sinks are not stamped. Beautifully polished and detailed for professional applications.

### Mod SE-430



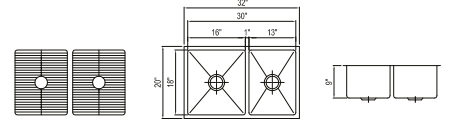
Sink Price

\$2109

Add S/S Grates

\$585

### Mod SE-431



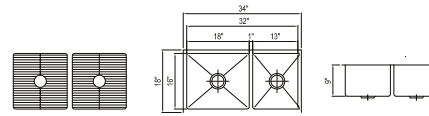
Sink Price

\$2180

Add S/S Grates

\$598

### Mod SE-432



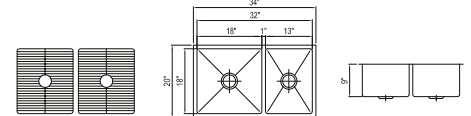
Sink Price

\$2180

Add S/S Grates

\$598

### Mod SE-433



Sink Price

\$2252

Add S/S Grates

\$624



T-316L for caustic/corrosive environments available as an added option. Call to inquire 650-589-3241

Stainless Grates are

- ✓ Heavy Duty T-304 Stainless Steel
- ✓ 1/4 Thick Perimeter Rod
- ✓ Rubber No Scratch Feet
- ✓ Dish Washer Safe



Made in USA. Certified to ANSI Code/Standard Compliance ASME 112.19.3.00

## USE FOR ARCHITECT / ENGINEER / CONTRACTOR APPROVAL

Job name \_\_\_\_\_

Date \_\_\_\_\_ QTY \_\_\_\_\_ Contractor \_\_\_\_\_

Model No. \_\_\_\_\_ Customer \_\_\_\_\_ Architect/Engineer \_\_\_\_\_

## Performance Through Stainless!

43 South Linden Ave South San Francisco CA 94080 Ph (650) 589-4231 Fax (650) 589-3981 www.berlinusa.com





Made in the US since 1941

# Hand crafted Pro-series Undermount Sinks SE-Series

16G



1,65 mm



**T-304**  
Premium High Grade Stainless With a #4 Satin Finish

PRICES

Sink Price

Add S/S Grates

Mod SE-430

\$2109

\$585

Mod SE-431

\$2180

\$598

Mod SE-432

\$2180

\$598

Mod SE-433

\$2252

\$624



**Noise Reduction**  
Sound coated bottom welded and polished assembly



**Not Stamped**  
Fully formed, welded and polished



**Polished**  
Beautifully polished and detailed for professional applications



**T-316**  
Available for caustic/ corrosive environments



**Warranty**  
Lifetime warranty



**NSF Certified**  
Code/Standard Compliance ASME 112.19.3.00



16 GA. T-304 Stainless Steel #4 Satin Finish

Hand Crafted Welded and Polished

## USE FOR ARCHITECT / ENGINEER / CONTRACTOR APPROVAL

Job name \_\_\_\_\_

Date \_\_\_\_\_ QTY \_\_\_\_\_ Contractor \_\_\_\_\_

Model No. \_\_\_\_\_ Customer \_\_\_\_\_ Architect/Engineer \_\_\_\_\_

Performance Through Stainless!

43 South Linden Ave South San Francisco CA 94080 Ph (650) 589-4231 Fax (650) 589-3981 www.berlinusa.com



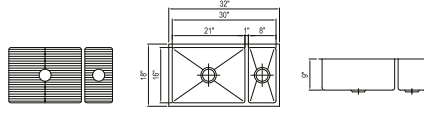
Made in the US since 1941

# Hand crafted Pro-series Undermount Sinks SM-Series

## Specifications

16GA thickness (1.65mm). Stainless steel construction T-304 premium high grade stainless steel with a #4 satin finish Sound coated bottom for "noise reduction" fully welded and polished assembly. Sinks are not stamped. Beautifully polished and detailed for professional applications.

### Mod SM-430



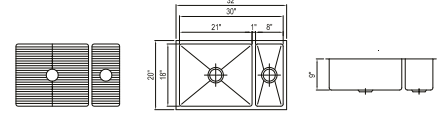
Sink Price

**\$2174**

Add S/S Grates

**\$488**

### Mod SM-431



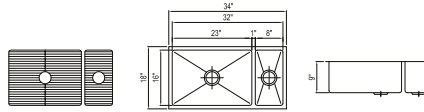
Sink Price

**\$2239**

Add S/S Grates

**\$494**

### Mod SM-432



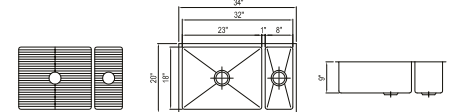
Sink Price

**\$2239**

Add S/S Grates

**\$494**

### Mod SM-433



Sink Price

**\$2306**

Add S/S Grates

**\$520**



T-316L for caustic/corrosive environments available as an added option. Call to inquire 650-589-3241

Stainless Grates are

- ✓ Heavy Duty T-304 Stainless Steel
- ✓ 1/4 Thick Perimeter Rod
- ✓ Rubber No Scratch Feet
- ✓ Dish Washer Safe



Made in USA. Certified to ANSI Code/Standard Compliance ASME 112.19.3.00

## USE FOR ARCHITECT / ENGINEER / CONTRACTOR APPROVAL

Job name \_\_\_\_\_

Date \_\_\_\_\_ QTY \_\_\_\_\_ Contractor \_\_\_\_\_

Model No. \_\_\_\_\_ Customer \_\_\_\_\_ Architect/Engineer \_\_\_\_\_

## Performance Through Stainless!

43 South Linden Ave South San Francisco CA 94080 Ph (650) 589-4231 Fax (650) 589-3981 www.berlinusa.com



Made in the US since 1941

# Hand crafted Pro-series Undermount Sinks SM-Series

16G



1,65 mm



**T-304**  
Premium High Grade Stainless With a #4 Satin Finish

PRICES

Sink Price

Add S/S Grates

Mod SM-430	\$2174	\$488
Mod SM-431	\$2239	\$494
Mod SM-432	\$2239	\$494
Mod SM-433	\$2267	\$520



**Noise Reduction**  
Sound coated bottom welded and polished assembly



**Not Stamped**  
Fully formed, welded and polished



**Polished**  
Beautifully polished and detailed for professional applications



**T-316**  
Available for caustic/ corrosive environments



**Warranty**  
Lifetime warranty



**NSF Certified**  
Code/Standard Compliance ASME 112.19.3.00



16 GA. T-304 Stainless Steel #4 Satin Finish

Hand Crafted Welded and Polished

## USE FOR ARCHITECT / ENGINEER / CONTRACTOR APPROVAL

Job name \_\_\_\_\_  
 Date \_\_\_\_\_ QTY \_\_\_\_\_ Contractor \_\_\_\_\_  
 Model No. \_\_\_\_\_ Customer \_\_\_\_\_ Architect/Engineer \_\_\_\_\_

Performance Through Stainless!

43 South Linden Ave South San Francisco CA 94080 Ph (650) 589-4231 Fax (650) 589-3981 www.berlinusa.com



# HAND CRAFTED PRO-SERIES

undermount sinks

Performance Through Stainless!

