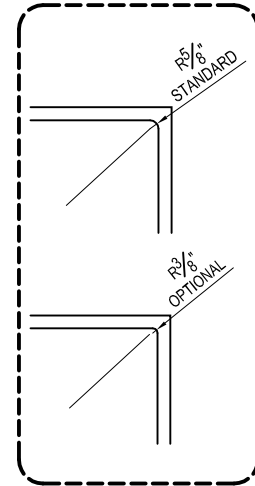
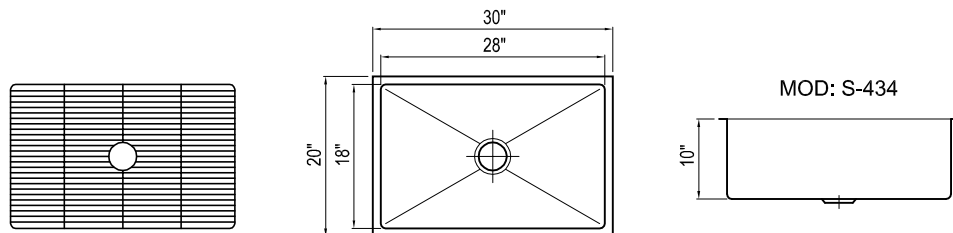
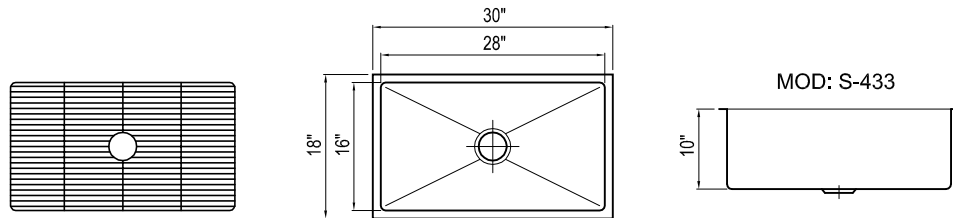
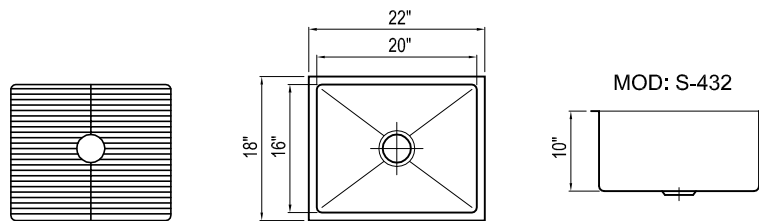
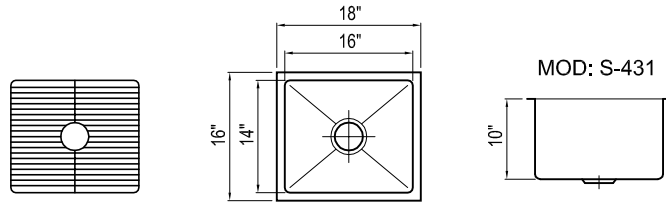
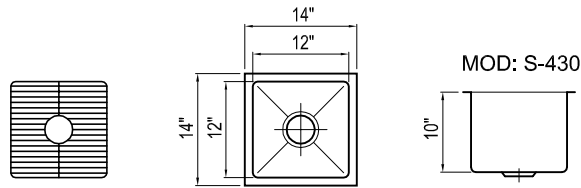


PROFESSIONAL GRADE



WARRANTY:

BERLINUSA "NO HASSLE" LIFETIME WARRANTY.

CODE / STANDARD COMPLIANCE.
 ASME 112.19.3-00

USE FOR ARCHITECT / ENGINEER / CONTRACTOR APPROVAL

JOB NAME _____ DATE _____
 MODEL No. _____ QTY _____
 CUSTOMER _____
 CONTRACTOR _____
 ARCHITECT / ENGINEER _____

T-316L AVAILABLE FOR CAUSTIC / CORROSIVE ENVIRONMENTS.



MADE IN THE U.S.A
 CERTIFIED TO ANS I

MOD. NO.	SINK PRICE	ADD S/S GRATE
S-430	\$ 490.00	\$ 180.00
S-431	\$ 552.00	\$ 195.00
S-432	\$ 643.00	\$ 205.00
S-433	\$ 699.00	\$ 215.00
S-434	\$ 769.00	\$ 225.00

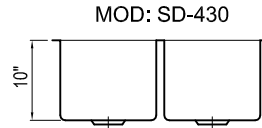
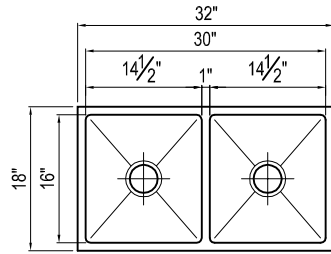
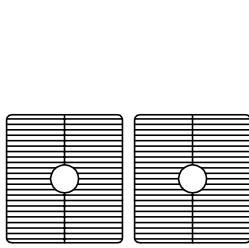
SPECIFICATIONS

16GA. STAINLESS STEEL CONSTRUCTION T-304 HIGH GRADE MATERIALS. #4 SATIN POLISHED FINISH AND SOUND COATED BOTTOM "NOISE REDUCTION" FULLY WELDED AND POLISHED ASSEMBLY. SINKS ARE NOT STAMPED. BEAUTIFULLY POLISHED AND DETAILED FOR PROFESSIONAL APPLICATIONS.

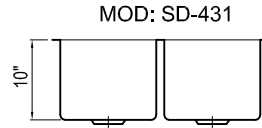
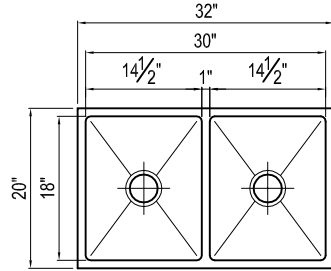
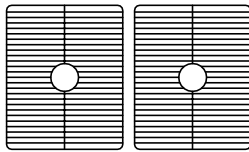
STAINLESS GRATES ARE:

- DURABLE ELECTRO POLISHED.
- WITH RUBBER FEET INCLUDED .
- LIFETIME GUARANTEED.

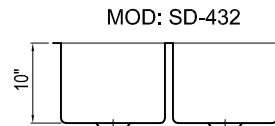
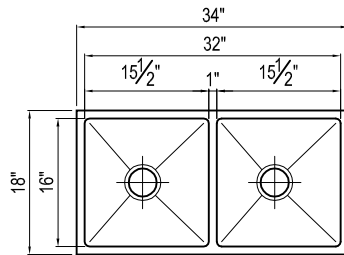
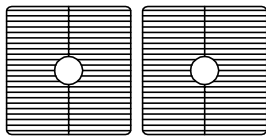
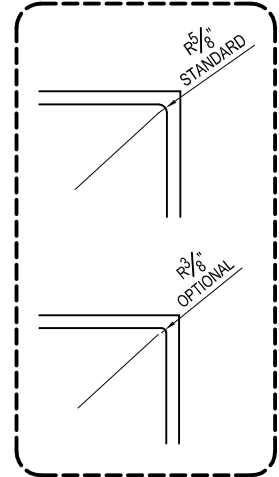
PROFESSIONAL GRADE



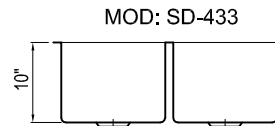
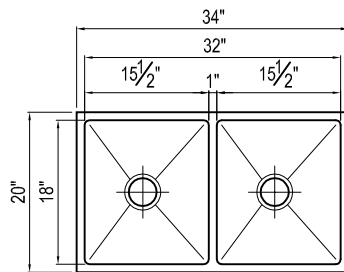
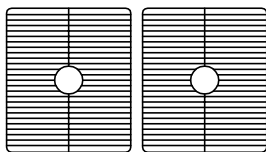
MOD: SD-430



MOD: SD-431



MOD: SD-432



MOD: SD-433

WARRANTY:

BERLINUSA "NO HASSLE" LIFETIME WARRANTY.

CODE / STANDARD COMPLIANCE .
 ASME 112.19.3-00

USE FOR ARCHITECT / ENGINEER / CONTRACTOR APPROVAL

JOB NAME _____ DATE _____
 MODEL No. _____ QTY _____
 CUSTOMER _____
 CONTRACTOR _____
 ARCHITECT / ENGINEER _____

T-316L AVAILABLE FOR CAUSTIC / CORROSIVE ENVIRONMENTS.



MADE IN THE U.S.A
 CERTIFIED TO ANS I

SD SINKS ARE SPLIT EQUALLY SIDE BY SIDE		
MOD. NO.	SINK PRICE	ADD S/S GRATE
SD-430	\$ 1,192.00	\$ 450.00
SD-431	\$ 1,241.00	\$ 460.00
SD-432	\$ 1,262.00	\$ 470.00
SD-433	\$ 1,311.00	\$ 480.00

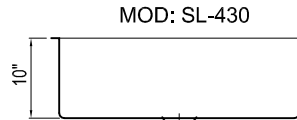
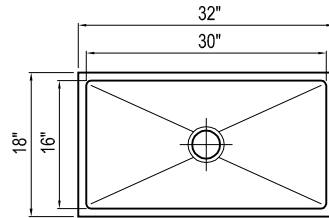
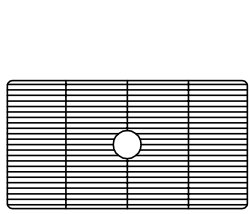
STAINLESS GRATES ARE:

- DURABLE ELECTRO POLISHED.
- WITH RUBBER FEET INCLUDED .
- LIFETIME GUARANTEED.

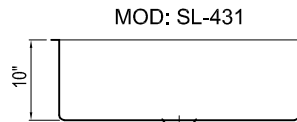
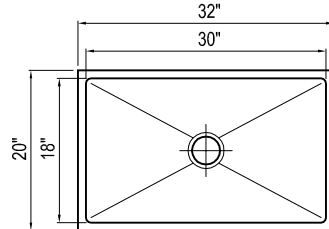
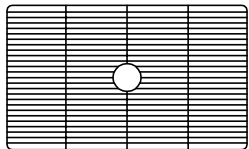
SPECIFICATIONS

16GA. STAINLESS STEEL CONSTRUCTION T-304 HIGH GRADE MATERIALS. #4 SATIN POLISHED FINISH AND SOUND COATED BOTTOM "NOISE REDUCTION" FULLY WELDED AND POLISHED ASSEMBLY. SINKS ARE NOT STAMPED. BEAUTIFULLY POLISHED AND DETAILED FOR PROFESSIONAL APPLICATIONS.

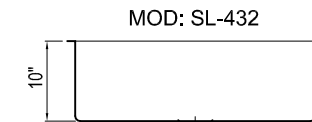
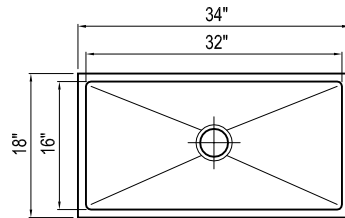
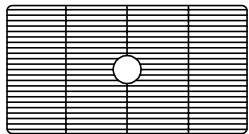
PROFESSIONAL GRADE



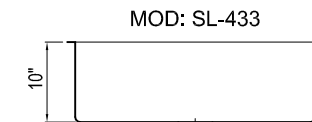
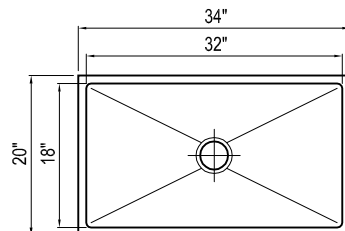
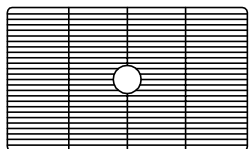
MOD: SL-430



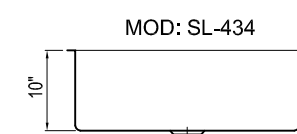
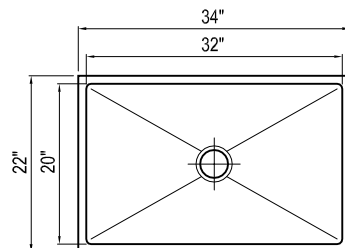
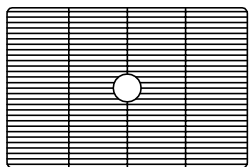
MOD: SL-431



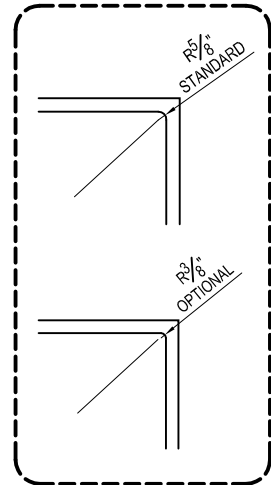
MOD: SL-432



MOD: SL-433



MOD: SL-434



WARRANTY:

BERLINUSA "NO HASSLE" LIFETIME WARRANTY.

CODE / STANDARD COMPLIANCE . ASME 112.19.3-00

USE FOR ARCHITECT / ENGINEER / CONTRACTOR APPROVAL

JOB NAME _____ DATE _____
 MODEL No. _____ QTY _____
 CUSTOMER _____
 CONTRACTOR _____
 ARCHITECT / ENGINEER _____



MADE IN THE U.S.A
 CERTIFIED TO ANS I

T-316L AVAILABLE FOR CAUSTIC / CORROSIVE ENVIRONMENTS.

MOD. NO.	SINK PRICE	ADD S/S GRATE
SL-430	\$ 842.00	\$ 225.00
SL-431	\$ 895.00	\$ 230.00
SL-432	\$ 912.00	\$ 235.00
SL-433	\$ 961.00	\$ 240.00
SL-434	\$ 1,016.00	\$ 250.00

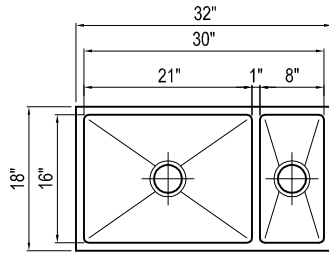
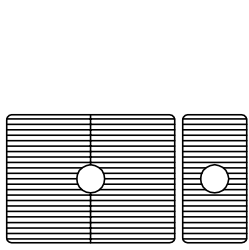
SPECIFICATIONS

16GA. STAINLESS STEEL CONSTRUCTION T-304 HIGH GRADE MATERIALS. #4 SATIN POLISHED FINISH AND SOUND COATED BOTTOM "NOISE REDUCTION" FULLY WELDED AND POLISHED ASSEMBLY. SINKS ARE STAMPED, BEAUTIFULLY POLISHED AND DETAILED FOR PROFESSIONAL APPLICATIONS.

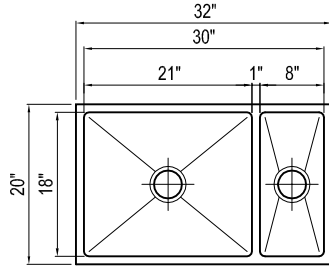
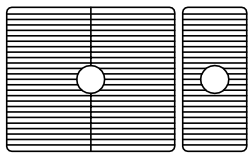
STAINLESS GRATES ARE:

- DURABLE ELECTRO POLISHED.
- WITH RUBBER FEET INCLUDED .
- LIFETIME GUARANTEED.

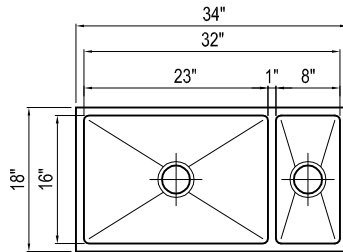
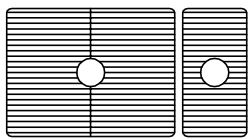
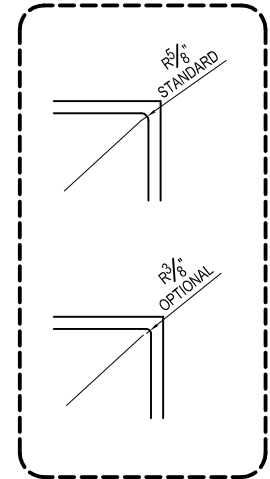
PROFESSIONAL GRADE



MOD: SM-430



MOD: SM-431

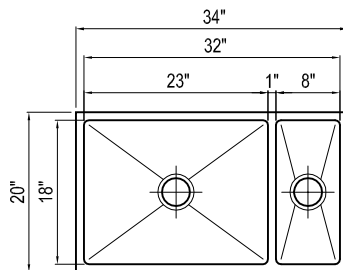
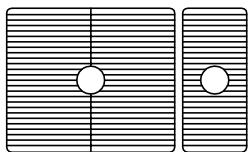


MOD: SM-432



WARRANTY:

BERLINUSA "NO HASSLE" LIFETIME WARRANTY.



MOD: SM-433



CODE / STANDARD COMPLIANCE .
 ASME 112.19.3-00

T-316L AVAILABLE FOR CAUSTIC / CORROSIVE ENVIRONMENTS.

USE FOR ARCHITECT / ENGINEER / CONTRACTOR APPROVAL

JOB NAME _____ DATE _____

MODEL No. _____ QTY _____

CUSTOMER _____

CONTRACTOR _____

ARCHITECT / ENGINEER _____



MADE IN THE U.S.A
 CERTIFIED TO ANSI

- SM- SERIES SINKS HAVE A 8" I.D. LEFT OR RIGHT COMPARTMENT. (SPECIFY "LEFT" OR "RIGHT" COMPARTMENT)
- SMALL & LARGE GRATE INCLUDED.

MOD. NO.	SINK PRICE	ADD S/S GRATE
SM-430	\$ 1,311.00	\$ 375.00
SM-431	\$ 1,255.00	\$ 380.00
SM-432	\$ 1,1350.00	\$ 390.00
SM-433	\$ 1,402.00	\$ 400.00

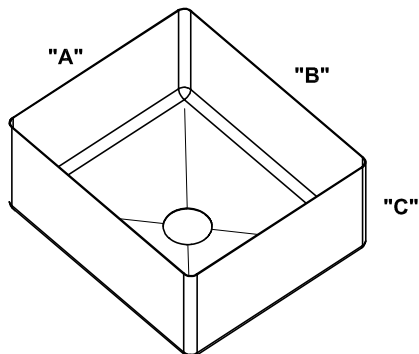
STAINLESS GRATES ARE:

- DURABLE ELECTRO POLISHED.
- WITH RUBBER FEET INCLUDED .
- LIFETIME GUARANTEED.

SPECIFICATIONS

16GA. STAINLESS STEEL CONSTRUCTION T-304 HIGH GRADE MATERIALS. #4 SATIN POLISHED FINISH AND SOUND COATED BOTTOM "NOISE REDUCTION" FULLY WELDED AND POLISHED ASSEMBLY. SINKS ARE STAMPED, BEAUTIFULLY POLISHED AND DETAILED FOR PROFESSIONAL APPLICATIONS.

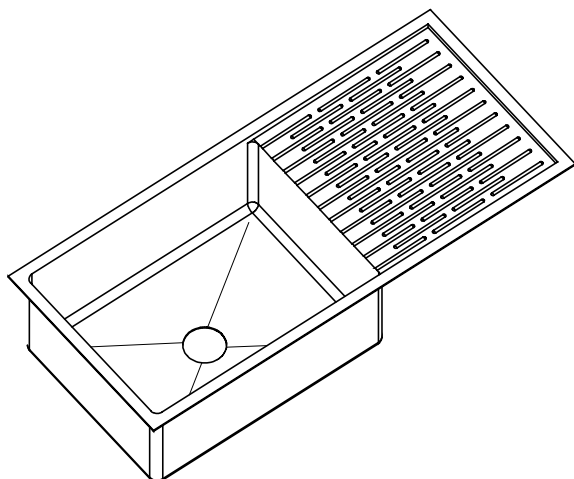
PROFESSIONAL GRADE



RAW EDGE PRODUCTION SINKS
 SP SERIES (CUSTOM SIZES AVAILABLE)

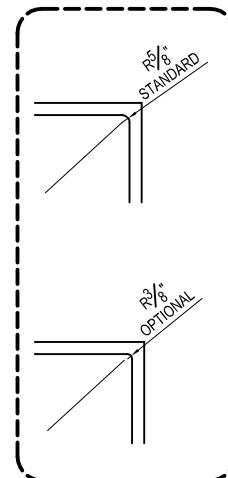
MOD. NO.	"A" LENGHT	"B" WIDTH	"C" DEPTH	SINK PRICE
SP-1717	17	17	12	\$ 480.00
SP-1723	17	23	12	\$ 540.00
SP-2323	23	23	12	\$ 610.00
SP-2923	29	23	12	\$ 665.00
SP-2929	29	29	12	\$ 730.00
SP-2830	28	30	12	\$ 730.00
SP-2820	28	20	12	\$ 625.00

T-316L AVAILABLE FOR CAUSTIC /
 CORROSIVE ENVIRONMENTS.



CUSTOM INTEGRATED SINK AND
 DRAINBOARD.
 XD - SERIES STARTING AT \$2,150.00

T-316L AVAILABLE FOR CAUSTIC /
 CORROSIVE ENVIRONMENTS.



USE FOR ARCHITECT / ENGINEER / CONTRACTOR APPROVAL

JOB NAME _____ DATE _____

MODEL No. _____ QTY _____

CUSTOMER _____

CONTRACTOR _____

ARCHITECT / ENGINEER _____

WARRANTY:

BERLINUSA "NO HASSLE"
 LIFETIME WARRANTY.

CODE / STANDARD
 COMPLIANCE.
 ASME 112.19.3-00

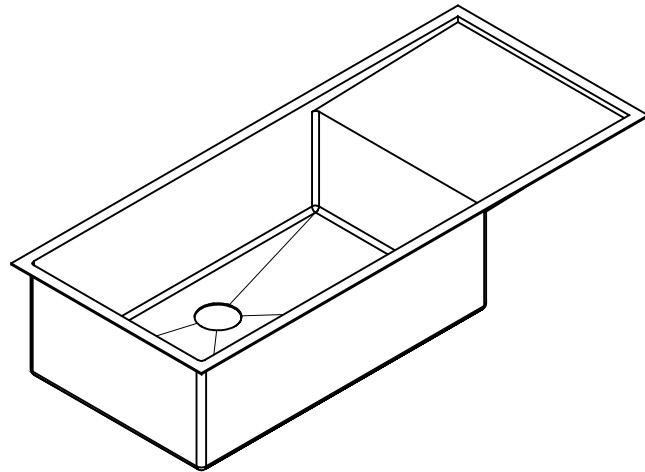
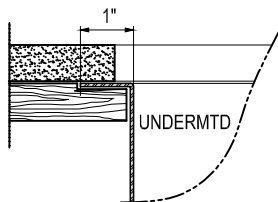
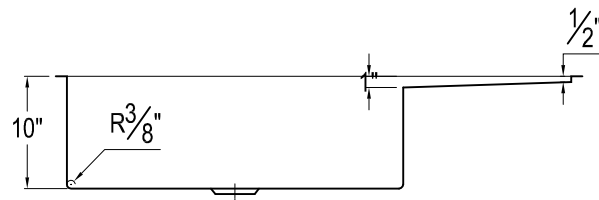
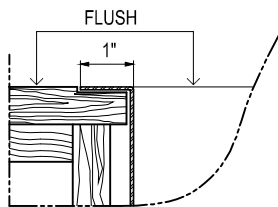
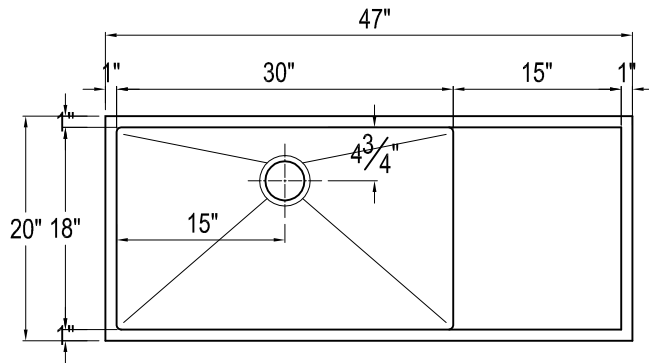
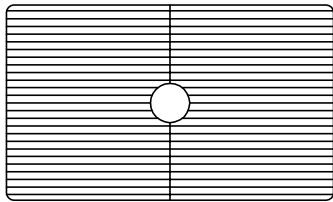


MADE IN
 THE U.S.A
 CERTIFIED
 TO ANS I

SPECIFICATIONS

16 GA. STAINLESS STEEL CONSTRUCTION T-304 HIGH GRADE MATERIALS.
 #4 SATIN POLISHED FINISH AND SOUND COATED BOTTOM "NOISE REDUCTION"
 FULLY WELDED AND POLISHED ASSEMBLY. SINKS ARE STAMPED,
 BEAUTIFULLY POLISHED AND DETAILED FOR PROFESSIONAL APPLICATIONS.

XL SERIES STARTING
 AT \$1680.00 / AS SHOWN



WARRANTY:

BERLINUSA "NO HASSLE"
 LIFETIME WARRANTY.

CODE / STANDARD
 COMPLIANCE .
 ASME 112.19.3-00

T-316L AVAILABLE FOR
 CAUSTIC / CORROSIVE
 ENVIRONMENTS .



MADE IN
 THE U.S.A
 CERTIFIED
 TO ANS I

USE FOR ARCHITECT / ENGINEER / CONTRACTOR APPROVAL

JOB NAME _____ DATE _____

MODEL No. _____ QTY _____

CUSTOMER _____

CONTRACTOR _____

ARCHITECT / ENGINEER _____

SPECIFICATIONS

16 GA. STAINLESS STEEL CONSTRUCTION T-304 HIGH GRADE MATERIALS.
 #4 SATIN POLISHED FINISH AND SOUND COATED BOTTOM "NOISE REDUCTION"
 FULLY WELDED AND POLISHED ASSEMBLY. SINKS ARE STAMPED,
 BEAUTIFULLY POLISHED AND DETAILED FOR PROFESSIONAL APPLICATIONS.